

# THE ASHTON C

*Quick possession home*

-  3 BEDROOM
-  2.5 BATH
-  1,600 ft<sup>2</sup>
-  \$549,900



Jackie DaSilva  
519-207-6222  
jdasilva@dougarryhomes.com



 123 Empire Parkway, St. Thomas  
Lot 10, Unit 3, Harvest Run

This plan is property of Doug Tarry Homes. Renderings are artist's concept. Prices, specifications, plans and information are subject to change without notice. See sales representatives for more information. E.O.E.



# THE ASHTON C



123 Empire Parkway  
Lot 10, Harvest Run



*Harvest*  
- RUN -

Site plan is artist's concept. Lot dimensions are approximate and depend on final survey. Landscape areas and plantings are concepts only and may vary from finished landscape. See sales representative for more information. E. & O. E.

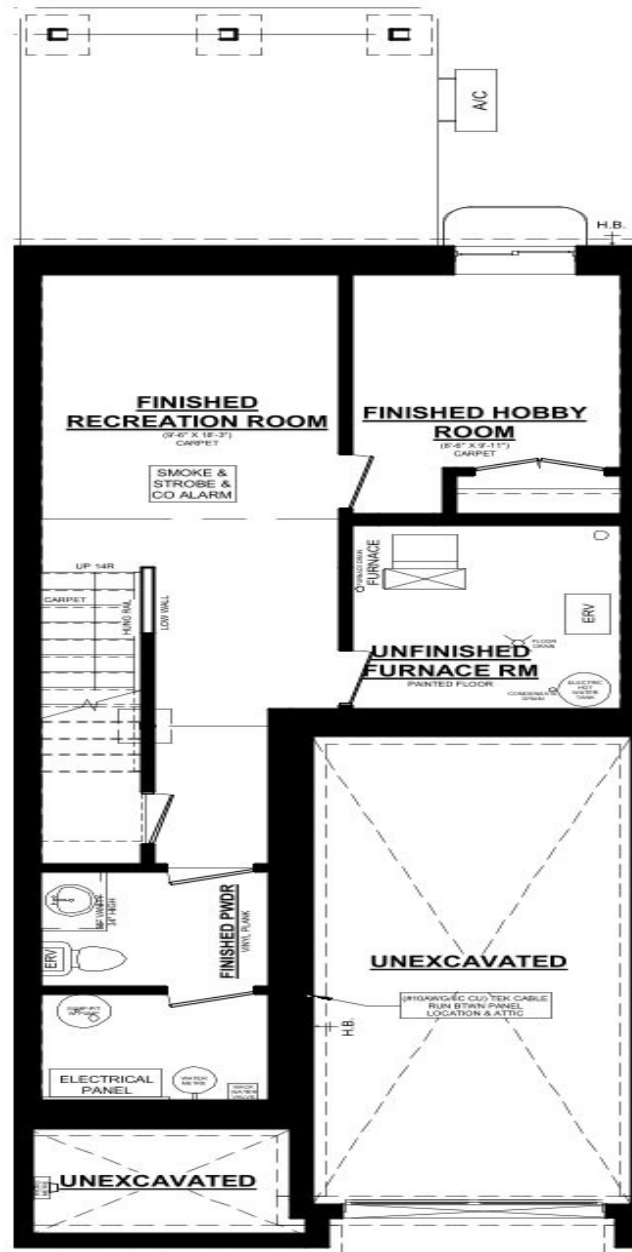
This plan is property of Doug Tarry Homes. Renderings are artist's concept. Prices, specifications, plans and information are subject to change without notice. See sales representatives for more information. E.O.E.



# THE ASHTON C

123 Empire Parkway  
Lot 10, Harvest Run

## BASEMENT PLAN



**Ashton C UNIT #3  
BASEMENT PLAN**  
415 SQ. FT. FINISHED BASEMENT SPACE

### UPGRADES INCLUDE:

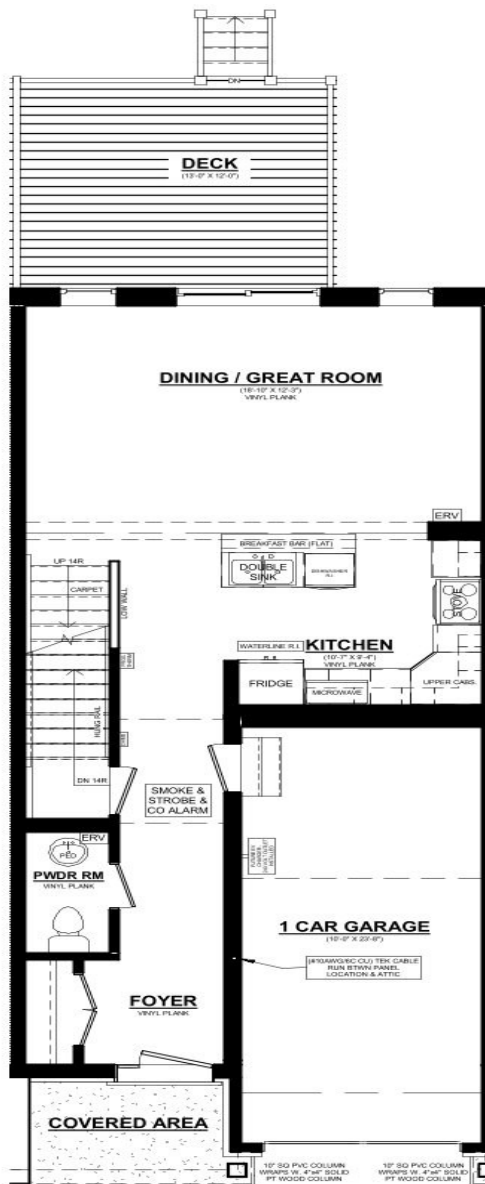
- Quartz Countertop in Kitchen
- Kitchen backsplash
- Luxury Vinyl Plank Flooring
- Fridge, Stove & Dishwasher
- Finished Basement
- Pressure Treated wood Deck
- Backs onto Green Space

# THE ASHTON C

123 Empire Parkway  
Lot 10, Harvest Run

## MAIN FLOOR PLAN

### ASHTON 'C' UNIT#3 LOT #10 EMPIRE PARKWAY



Ashton C UNIT #3  
MAINFLOOR PLAN  
690 SQ. FT.  
8" CEILINGS ON MAINFLOOR

### UPGRADES INCLUDE:

- Quartz Countertops in Kitchen
- Kitchen backsplash
- Luxury Vinyl Plank Flooring
- Fridge, Stove & Dishwasher
- Finished Basement
- Pressure Treated Wood Deck
- Backs onto Green Space

# THE ASHTON C

123 Empire Parkway  
Lot 10, Harvest Run

## 2ND FLOOR PLAN



### UPGRADES INCLUDE:

- Quartz Countertops in Kitchen
- Kitchen backsplash
- Luxury Vinyl Plank Flooring
- Fridge, Stove & Dishwasher
- Finished Basement
- Pressure Treated Wood Deck
- Backs onto Green Space

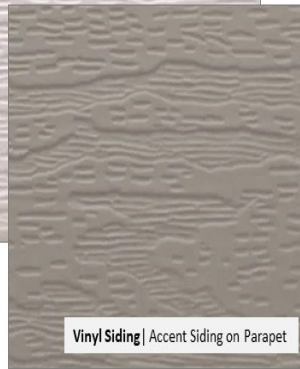
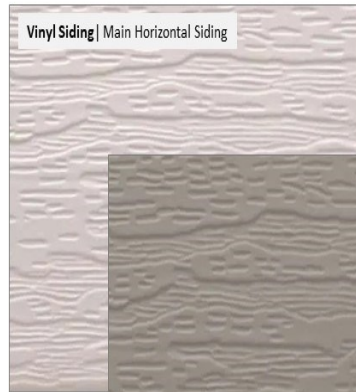
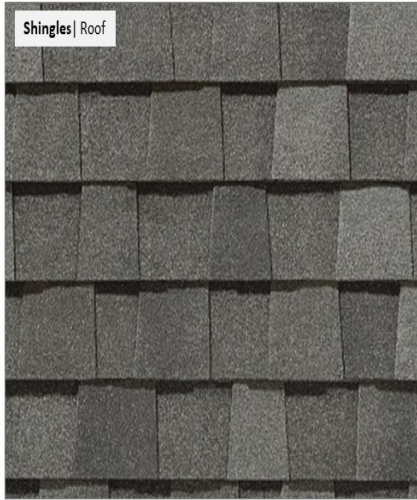
**Ashton C UNIT #3**  
**2ND FLOOR PLAN**  
910 SQ. FT.  
8' CEILINGS ON 2ND FLOOR

This plan is property of Doug Tarry Homes. Renderings are artist's concept. Prices, specifications, plans and information are subject to change without notice. See sales representatives for more information. E.O.E.



# EXTERIOR PACKAGE

123 Empire Parkway  
Lot 10, Harvest Run



Colours and patterns may slightly vary from physical materials. The images shown are only intended as a representation of selections chosen. E.O.E.



ASHTON TOWNHOUSES  
EXTERIOR FINISH PACKAGE 2



Colours and patterns may slightly vary from physical materials.  
The images shown are only intended as a representation of selections chosen. E.&OE.

This plan is property of Doug Tarry Homes. Renderings are artist's concept. Prices, specifications, plans and information are subject to change without notice. See sales representatives for more information. E.O.E.



# INTERIOR PACKAGE

123 Empire Parkway  
Lot 10, Harvest Run



Colours and patterns may slightly vary from physical materials. The images shown are only intended as a representation of selections chosen. E.&OE.



ASHTON TOWNHOUSES  
INTERIOR FINISH PACKAGE 2



Colours and patterns may slightly vary from physical materials.  
The images shown are only intended as a representation of selections chosen. E.&OE.

This plan is property of Doug Tarry Homes. Renderings are artist's concept. Prices, specifications, plans and information are subject to change without notice. See sales representatives for more information. E.O.E.

