

# THE ASHTON C

*Quick possession home*



3 BEDROOM



2.5 BATH



1,600 ft<sup>2</sup>



\$579,900 END UNIT



Jackie DaSilva

519-207-6222

[jdasilva@dougarryhomes.com](mailto:jdasilva@dougarryhomes.com)



**119 Empire Parkway, St. Thomas  
Lot 10, Unit 1, Harvest Run**

This plan is property of Doug Tarry Homes. Renderings are artist's concept. Prices, specifications, plans and information are subject to change without notice. See sales representatives for more information. E.O.E.



# THE ASHTON C



119 Empire Parkway  
Lot 10, Harvest Run



*Harvest*  
- RUN -

Site plan is artist's concept. Lot dimensions are approximate and depend on final survey. Landscape areas and plantings are concepts only and may vary from finished landscape. See sales representative for more information. E. & O. E.

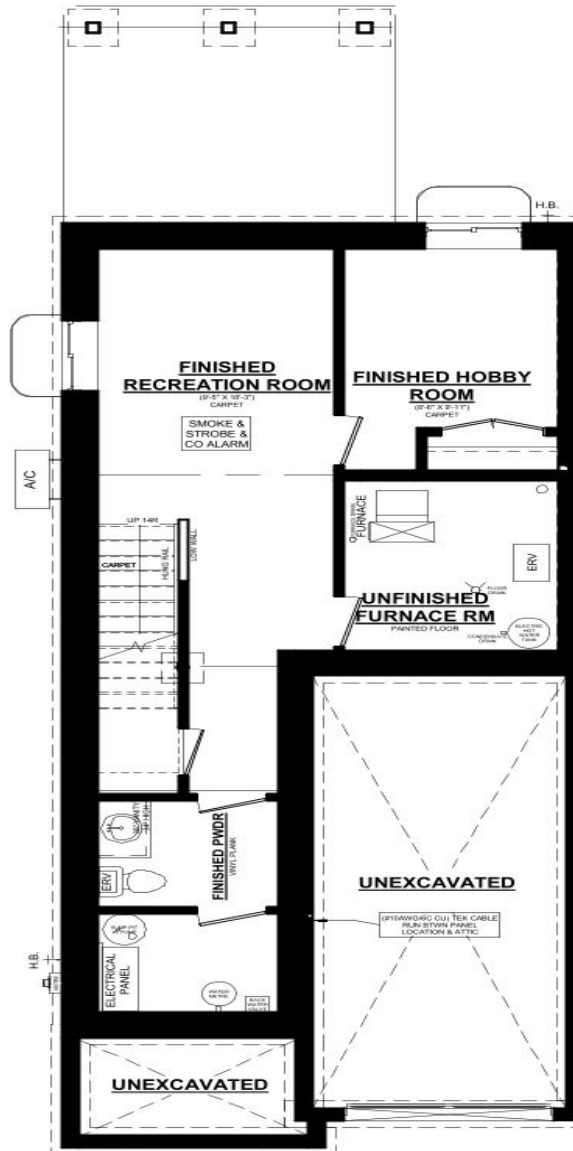
This plan is property of Doug Tarry Homes. Renderings are artist's concept. Prices, specifications, plans and information are subject to change without notice. See sales representatives for more information. E.O.E.



# THE ASHTON C

119 Empire Parkway  
Lot 10, Harvest Run

## BASEMENT PLAN



**ASHTON C UNIT #1  
BASEMENT PLAN**  
415 SQ. FT. FINISHED BASEMENT SPACE

### UPGRADES INCLUDE:

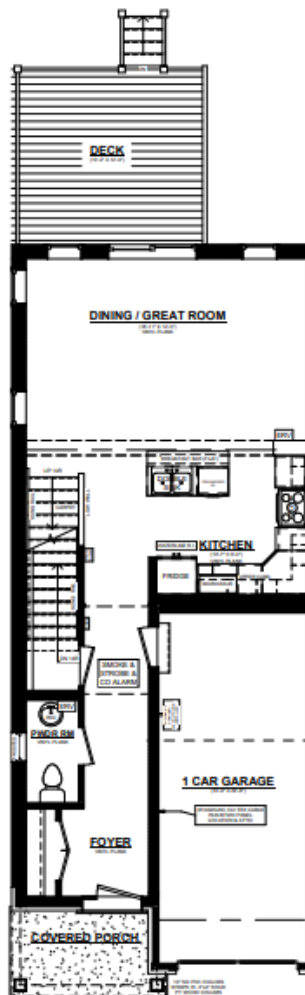
- Quartz Countertops
- Kitchen Backsplash
- Luxury Vinyl Plank Flooring
- Fridge, Stove & Dishwasher
- Finished Basement
- Pressure Treated wood Deck
- Backs onto Green Space

# THE ASHTON C

119 Empire Parkway  
Lot 10, Harvest Run

## MAIN FLOOR PLAN

ASHTON 'C' UNIT#1  
LOT #10 EMPIRE PARKWAY



ASHTON C UNIT #1  
MAINFLOOR PLAN  
690 SQ. FT.  
8" CEILINGS ON MAINFLOOR

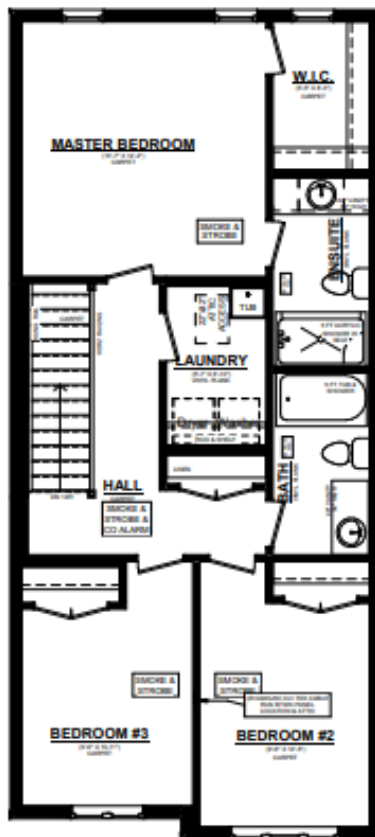
### UPGRADES INCLUDE:

- Quartz Countertops
- Kitchen Backsplash
- Luxury Vinyl Plank Flooring
- Fridge, Stove & Dishwasher
- Finished Basement
- Pressure Treated wood Deck
- Backs onto Green Space

# THE ASHTON C

119 Empire Parkway  
Lot 10, Harvest Run

## 2ND FLOOR PLAN



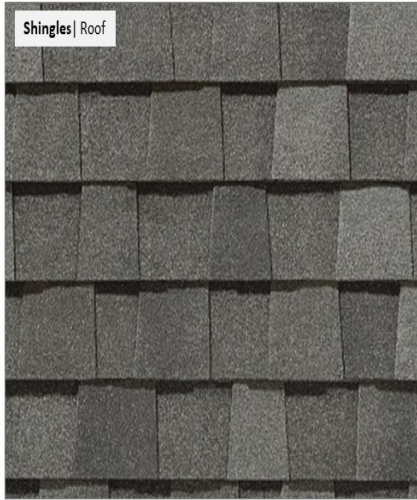
ASHTON C UNIT #1  
2ND FLOOR PLAN  
910 SQ. FT.  
8' CEILINGS ON 2ND FLOOR

### UPGRADES INCLUDE:

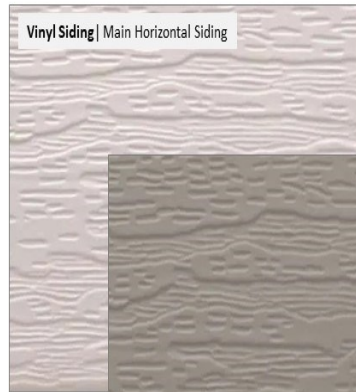
- Quartz Countertops
- Kitchen Backsplash
- Luxury Vinyl Plank Flooring
- Fridge, Stove & Dishwasher
- Finished Basement
- Pressure Treated wood Deck
- Backs onto Green Space

# EXTERIOR PACKAGE

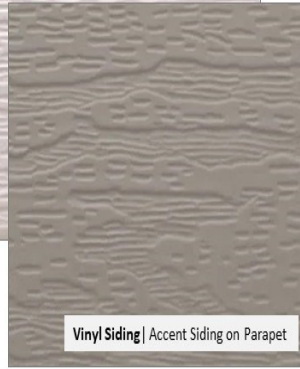
119 Empire Parkway  
Lot 10, Harvest Run



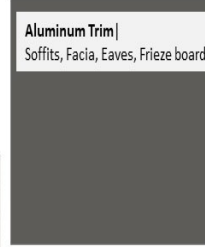
Shingles | Roof



Vinyl Siding | Main Horizontal Siding



Vinyl Siding | Accent Siding on Parapet



Aluminum Trim | Soffits, Facia, Eaves, Frieze board & Trim



Windows | Exterior Finish



Front Door | Finish

Front Door | Gripset

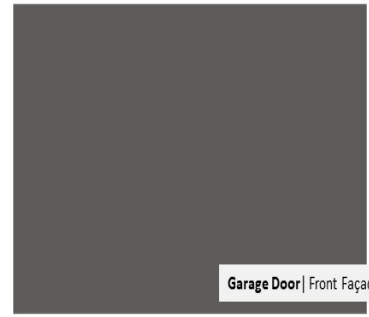
Front Door | Style



Brick | Main Level Facade



Stone | Stone Façade & Stone Column Bases



Garage Door | Front Façade

Colours and patterns may slightly vary from physical materials. The images shown are only intended as a representation of selections chosen. E.O.E.



ASHTON TOWNHOUSES  
EXTERIOR FINISH PACKAGE 2



Colours and patterns may slightly vary from physical materials.  
The images shown are only intended as a representation of selections chosen. E.&OE.

This plan is property of Doug Tarry Homes. Renderings are artist's concept. Prices, specifications, plans and information are subject to change without notice. See sales representatives for more information. E.O.E.



# INTERIOR PACKAGE

119 Empire Parkway  
Lot 10, Harvest Run



Colours and patterns may slightly vary from physical materials. The images shown are only intended as a representation of selections chosen. E.&OE.



ASHTON TOWNHOUSES  
INTERIOR FINISH PACKAGE 2



Colours and patterns may slightly vary from physical materials.  
The images shown are only intended as a representation of selections chosen. E.&OE.

This plan is property of Doug Tarry Homes. Renderings are artist's concept. Prices, specifications, plans and information are subject to change without notice. See sales representatives for more information. E.O.E.

