

THE OAKMONT C

Quick possession home



3 BEDROOM



2.5 BATH



2,001 ft²



\$750,711



Jackie DaSilva

519-207-6222

jdasilva@dougarryhomes.com



29 Ayrshire Ave., St. Thomas

Lot 55, Harvest Run

This plan is property of Doug Tarry Homes. Renderings are artist's concept. Prices, specifications, plans and information are subject to change without notice. See sales representatives for more information. E.O.E.



THE OAKMONT C



29 Ayrshire Ave
Lot 55, Harvest Run



Harvest
- RUN -

Site plan is artist's concept. Lot dimensions are approximate and depend on final survey. Landscape areas and plantings are concepts only and may vary from finished landscape. See sales representative for more information. E. & O. E.

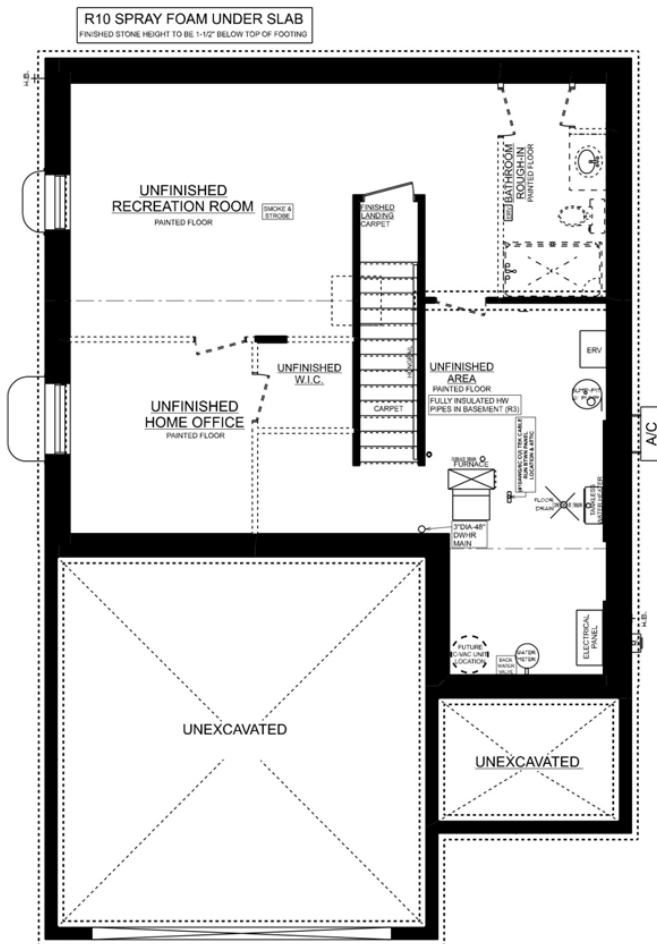
This plan is property of Doug Tarry Homes. Renderings are artist's concept. Prices, specifications, plans and information are subject to change without notice. See sales representatives for more information. E.O.E.



THE OAKMONT 'C'

29 Ayrshire Ave.
Lot 55, Harvest Run

BASEMENT PLAN



OAKMONT 'C'
BASEMENT PLAN

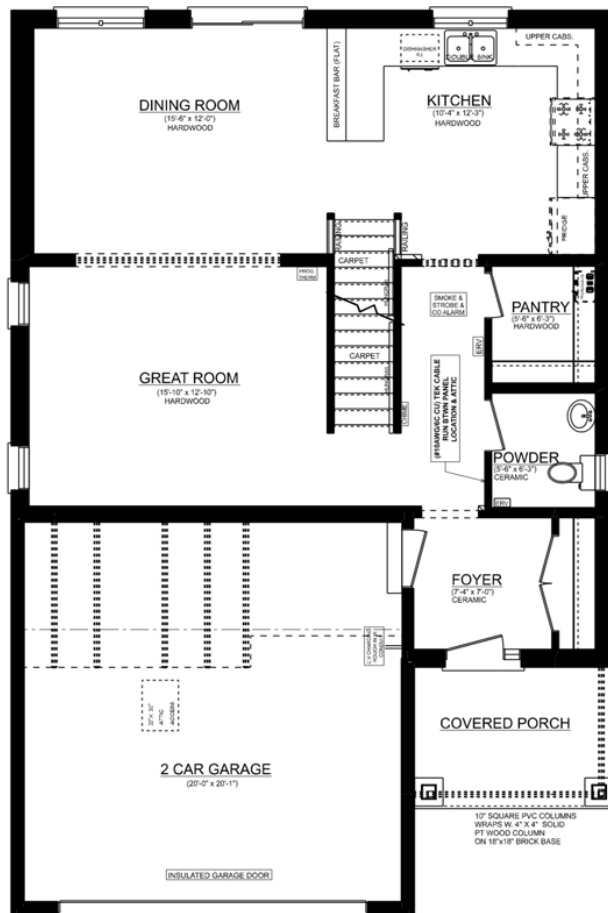
UPGRADES INCLUDE:

- Kitchen backsplash
- Kitchen Island
- Cabinetry Enhancements
- Electrical Features
- Designer Selected Finishes
- Cabinets in Laundry Room
- Hardwood Floors
- Plumbing Upgrades
- Ceramic tile in Ensuite

THE OAKMONT 'C'

28 Ayrshire Ave.
Lot 55, Harvest Run

MAIN FLOOR PLAN



OAKMONT 'C'
MAIN FLOOR PLAN
944 SQ. FT.
8' CEILING ON MAIN FLOOR

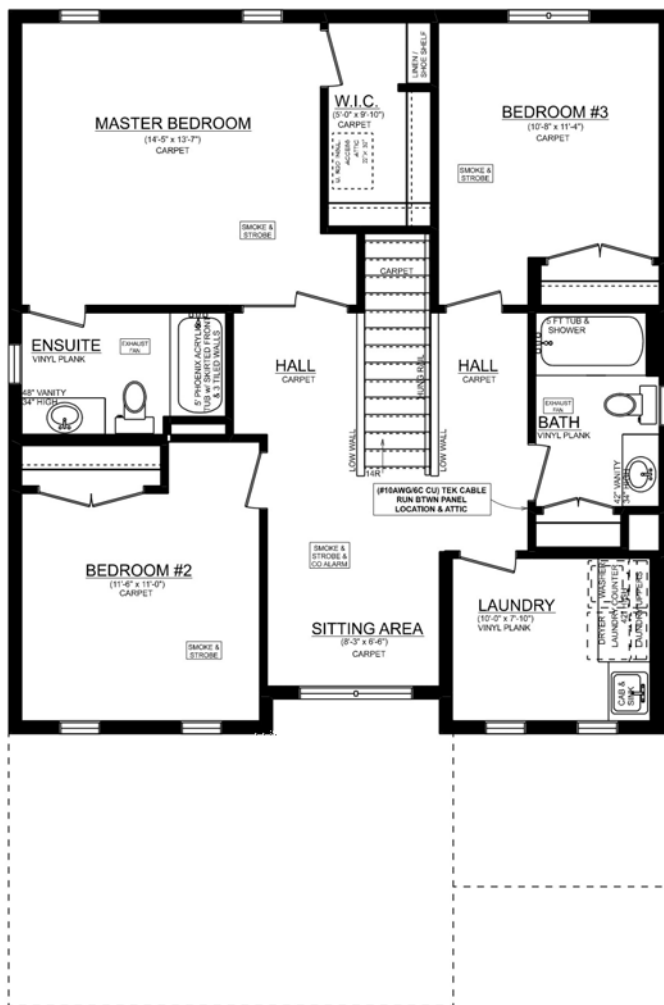
UPGRADES INCLUDE:

- Kitchen backsplash
- Kitchen Island
- Cabinetry Enhancements
- Electrical Features
- Designer Selected Finishes
- Cabinets in Laundry Room
- Hardwood Floors
- Plumbing Upgrades
- Ceramic tile in Ensuite

THE OAKMONT 'C'

29 Ayrshire Ave.
Lot 55, Harvest Run

2ND FLOOR PLAN



OAKMONT 'C'
2ND FLOOR PLAN
1057 SQ. FT.
8' CEILING ON 2ND FLOOR

UPGRADES INCLUDE:

- Kitchen backsplash
- Kitchen Island
- Cabinetry Enhancements
- Electrical Features
- Designer Selected Finishes
- Cabinets in Laundry Room
- Hardwood Floors
- Plumbing Upgrades
- Ceramic tile in Ensuite

EXTERIOR PACKAGE

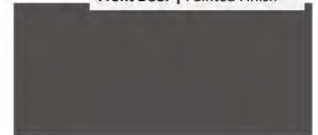
29 Ayrshire Ave
Lot55, Harvest Run



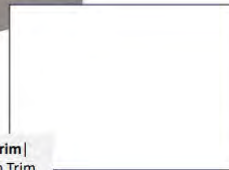
Exterior Cladding | Horizontal Vinyl Siding



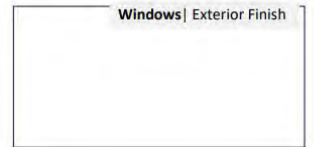
Front Door | Painted Finish



Exterior Trim | Aluminum Trim



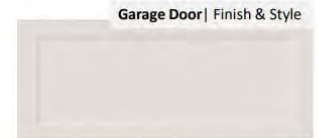
Windows | Exterior Finish



Gripset | Front Door with lever on interior side



Garage Door | Finish & Style



Colours and patterns may slightly vary from physical materials. The images shown are only intended as a representation of selections chosen. E.&OE.



HARVEST RUN - OAKMONT C
LOT 55-29 AYRSHIRE - EXTERIOR PACKAGE

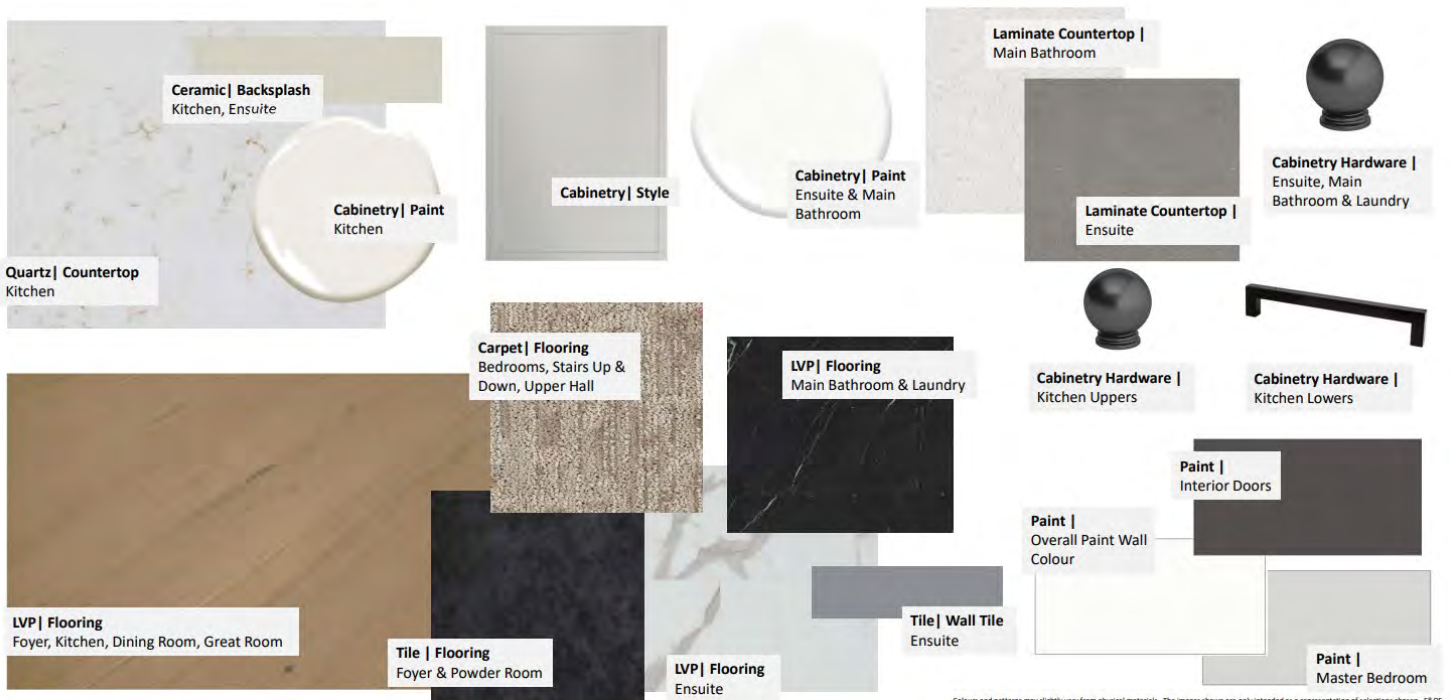
Colours and patterns may slightly vary from physical materials.
The images shown are only intended as a representation of selections chosen. E.&OE.

This plan is property of Doug Tarry Homes. Renderings are artist's concept. Prices, specifications, plans and information are subject to change without notice. See sales representatives for more information. E.O.E.



INTERIOR PACKAGE

29 Ayrshire Ave.
Lot 55, Harvest Run



Colours and patterns may slightly vary from physical materials. The images shown are only intended as a representation of selections chosen. E.&OE.



HARVEST RUN - OAKMONT C
LOT 55-29 AYRSHIRE - INTERIOR PACKAGE

Colours and patterns may slightly vary from physical materials.
The images shown are only intended as a representation of selections chosen. E.&OE.

This plan is property of Doug Tarry Homes. Renderings are artist's concept. Prices, specifications, plans and information are subject to change without notice. See sales representatives for more information. E.O.E.

