

THE ASHTON B

Quick possession home



3 BEDROOM



2.5 BATH



1,600 ft²



\$549,900 INTERIOR UNIT



Jackie DaSilva

519-207-6222

jdasilva@dougarryhomes.com



99 Empire Parkway, St. Thomas
Lot 13, Harvest Run

This plan is property of Doug Tarry Homes. Renderings are artist's concept. Prices, specifications, plans and information are subject to change without notice. See sales representatives for more information. E.O.E.



THE ASHTON B



99 Empire Parkway
Lot 13, Harvest Run



Harvest
- RUN -

Site plan is artist's concept. Lot dimensions are approximate and depend on final survey. Landscape areas and plantings are concepts only and may vary from finished landscape. See sales representative for more information. E. & O. E.

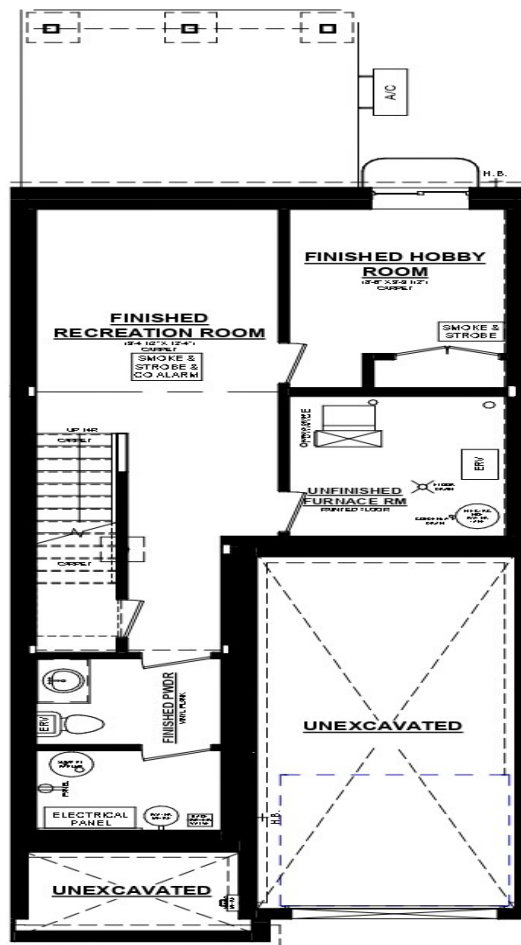
This plan is property of Doug Tarry Homes. Renderings are artist's concept. Prices, specifications, plans and information are subject to change without notice. See sales representatives for more information. E.O.E.



THE ASHTON B

99 Empire Parkway
Lot 13, Harvest Run

BASEMENT PLAN



**Ashton B UNIT #4
BASEMENT PLAN**
378 SQ. FT. FINISHED BASEMENT SPACE

UPGRADES INCLUDE:

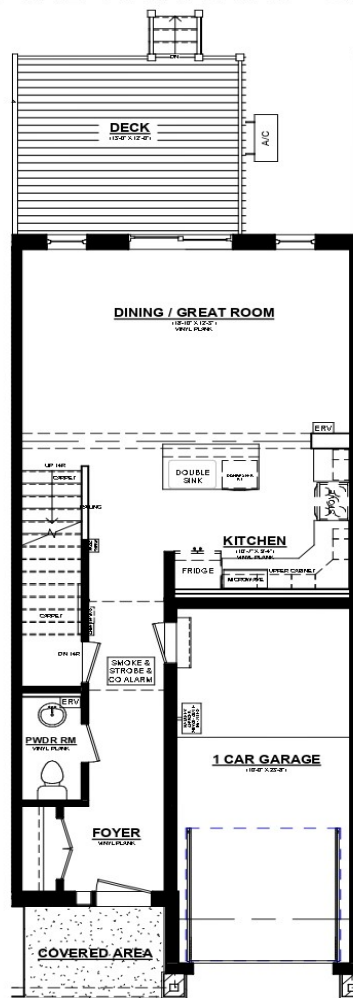
- Quartz Countertop in Kitchen
- Kitchen backsplash
- Luxury Vinyl Plank Flooring
- Fridge, Stove & Dishwasher
- Finished Basement
- Pressure Treated wood Deck
- Backs onto Green Space

THE ASHTON B

99 Empire Parkway
Lot 13, Harvest Run

MAIN FLOOR PLAN

ASHTON 'B' LOT #13 EMPIRE PARKWAY UNIT # 4



Ashton B UNIT #4 MAIN FLOOR PLAN

690 SQ. FT.
8' CEILINGS ON MAINFLOOR* CEILINGS ON MAINFLOOR

UPGRADES INCLUDE:

- Quartz Countertops in Kitchen
- Kitchen backsplash
- Luxury Vinyl Plank Flooring
- Fridge, Stove & Dishwasher
- Finished Basement
- Pressure Treated Wood Deck
- Backs onto Green Space

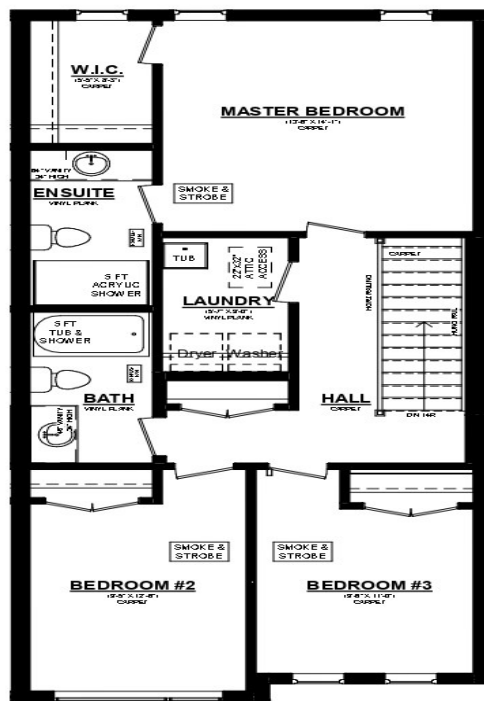
This plan is property of Doug Tarry Homes. Renderings are artist's concept. Prices, specifications, plans and information are subject to change without notice. See sales representatives for more information. E.O.E.



THE ASHTON B

99 Empire Parkway
Lot 13, Harvest Run

2ND FLOOR PLAN



Ashton B UNIT #4
2ND FLOOR PLAN PLAN
910 SQ. FT.

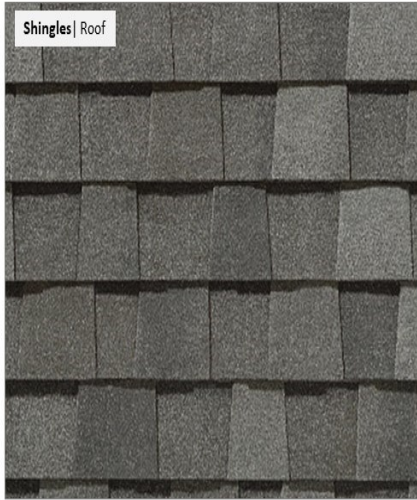
8' CEILINGS ON 2ND FLOOR' CEILINGS ON 2ND FLOOR PLAN

UPGRADES INCLUDE:

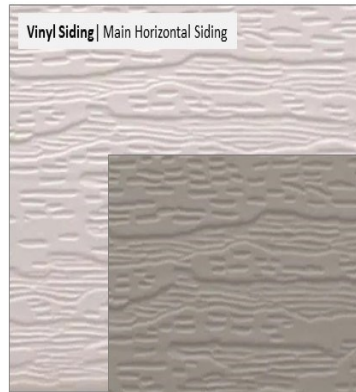
- Quartz Countertops in Kitchen
- Kitchen backsplash
- Luxury Vinyl Plank Flooring
- Fridge, Stove & Dishwasher
- Finished Basement
- Pressure Treated Wood Deck
- Backs onto Green Space

EXTERIOR PACKAGE

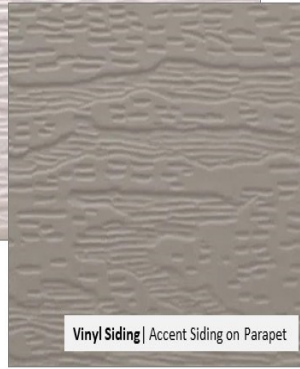
99 Empire Parkway
Lot 13, Harvest Run



Shingles | Roof



Vinyl Siding | Main Horizontal Siding



Vinyl Siding | Accent Siding on Parapet



Aluminum Trim |
Soffits, Facia, Eaves, Frieze board & Trim



Windows | Exterior Finish



Front Door | Finish

Front Door | Gripset

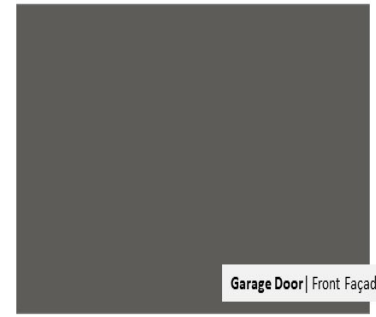
Front Door | Style



Brick | Main Level Facade



Stone | Stone Façade & Stone Column Bases



Garage Door | Front Façade

Colours and patterns may slightly vary from physical materials. The images shown are only intended as a representation of selections chosen. E.O.E.



ASHTON TOWNHOUSES
EXTERIOR FINISH PACKAGE 2



Colours and patterns may slightly vary from physical materials.
The images shown are only intended as a representation of selections chosen. E.&OE.

This plan is property of Doug Tarry Homes. Renderings are artist's concept. Prices, specifications, plans and information are subject to change without notice. See sales representatives for more information. E.O.E.



INTERIOR PACKAGE

99 Empire Parkway
Lot 13, Harvest Run



Colours and patterns may slightly vary from physical materials. The images shown are only intended as a representation of selections chosen. E.&OE.



ASHTON TOWNHOUSES
INTERIOR FINISH PACKAGE 2



Colours and patterns may slightly vary from physical materials.
The images shown are only intended as a representation of selections chosen. E.&OE.

This plan is property of Doug Tarry Homes. Renderings are artist's concept. Prices, specifications, plans and information are subject to change without notice. See sales representatives for more information. E.O.E.

