

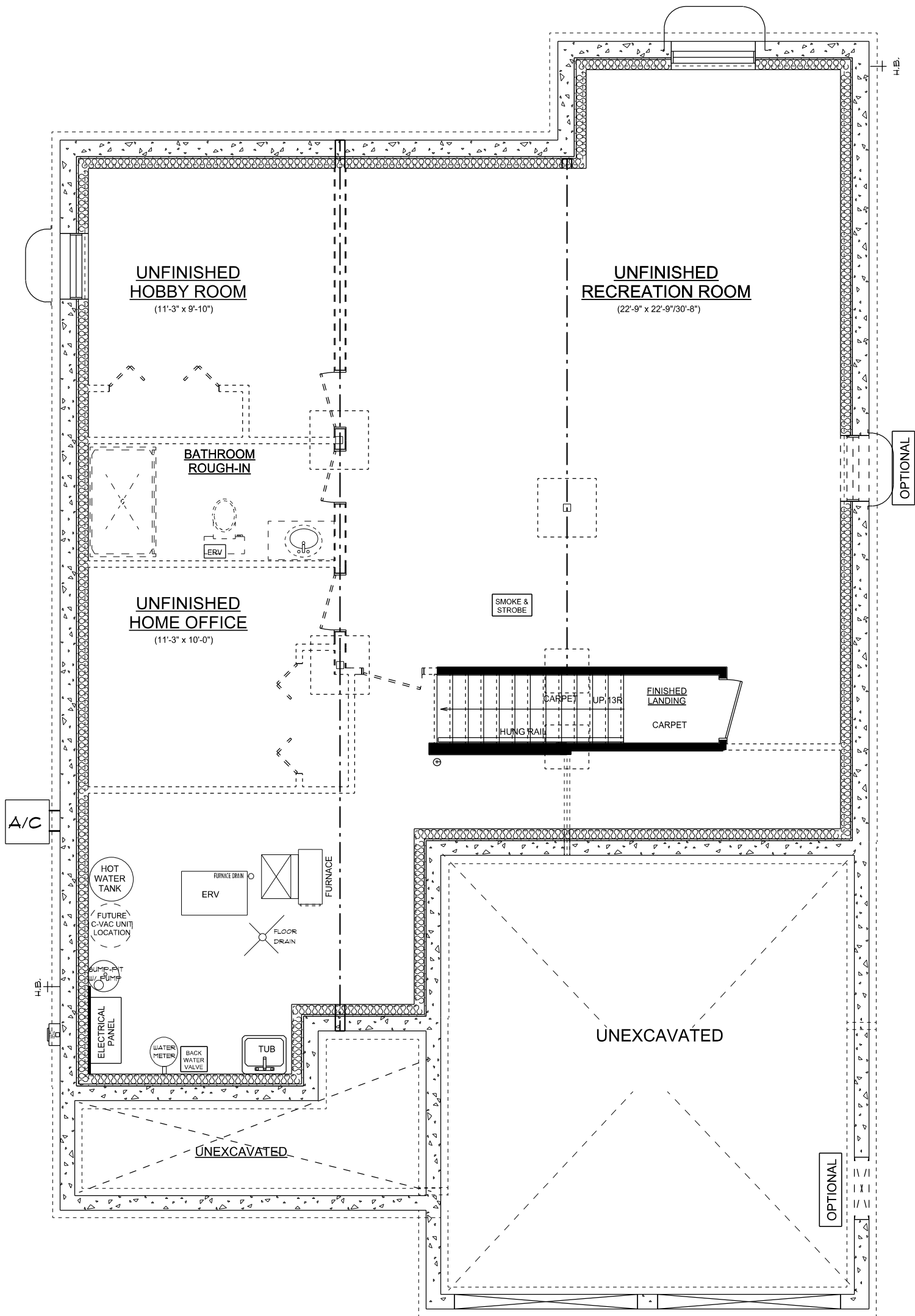
Redesign stairs to allow space for a Dining Area. Plan includes 2pc Powder Room w/ pedestal sink and 24x36 csmt window, Laundry Room with 24x32 csmt window, Ensuite with 5ft tub shower, 4ft vanity and 24x36 csmt window.

ROSEWOOD 'A' MAINFLOOR PLAN (OPTIONAL FLOOR PLAN WITH DINING AREA)

1440 SQ. FT.

8' CEILINGS ON MAINFLOOR

PRELIMINARY PLAN/NOT FOR CONSTRUCTION



ROSEWOOD 'A' BASEMENT PLAN (OPTIONAL FLOOR PLAN WITH DINING AREA)

PRELIMINARY PLAN/NOT FOR CONSTRUCTION